



A map of Norway is shown in a light gray color, centered on a dark blue background. The map includes the coastline and major islands. Overlaid on the map are various company names in white text, arranged in a grid-like pattern across the country. The names are: Leviat AS, Spenncon AS, Spenncon Rails, Contiga AS, Prefab Design AS, Loe Betongelement AS, Overhalla Betongbygg AS, Stabil AS, Elementpartner AS, Element NOR AS, Arcon AS, Førde Cementvare AS, Jaro AS, Pentacon AS, VS Element AS, Con-Form Bergen, Bright AS, Block Berge Bygg AS, Sør-element AS, Multiconsult AS, Nobi Voss AS, Spæncom, Norconsult AS, AmberCon, Djerving As, and Industri Beton. VSP is located at the bottom right of the map.

Leviat AS  
Spenncon AS  
Spenncon Rails  
Contiga AS  
Prefab Design AS  
Loe Betongelement AS  
Overhalla Betongbygg AS  
Stabil AS  
Elementpartner AS  
Element NOR AS  
Arcon AS  
Førde Cementvare AS  
Jaro AS  
Pentacon AS  
VS Element AS  
Con-Form Bergen  
Bright AS  
Block Berge Bygg AS  
Sør-element AS  
Multiconsult AS  
Nobi Voss AS  
Spæncom  
Norconsult AS  
AmberCon  
Djerving As  
Industri Beton  
VSP



## Software

Tekla Structures, Trimble Connect, Trimble Connect AR, FieldLink, RealWorks, SAP2000, ETABS, SAFE, Bridge, Idea Statica, OneClick LCA.



## Hardware

RPT600, X7, T100, XR10, SiteVision.



## Services

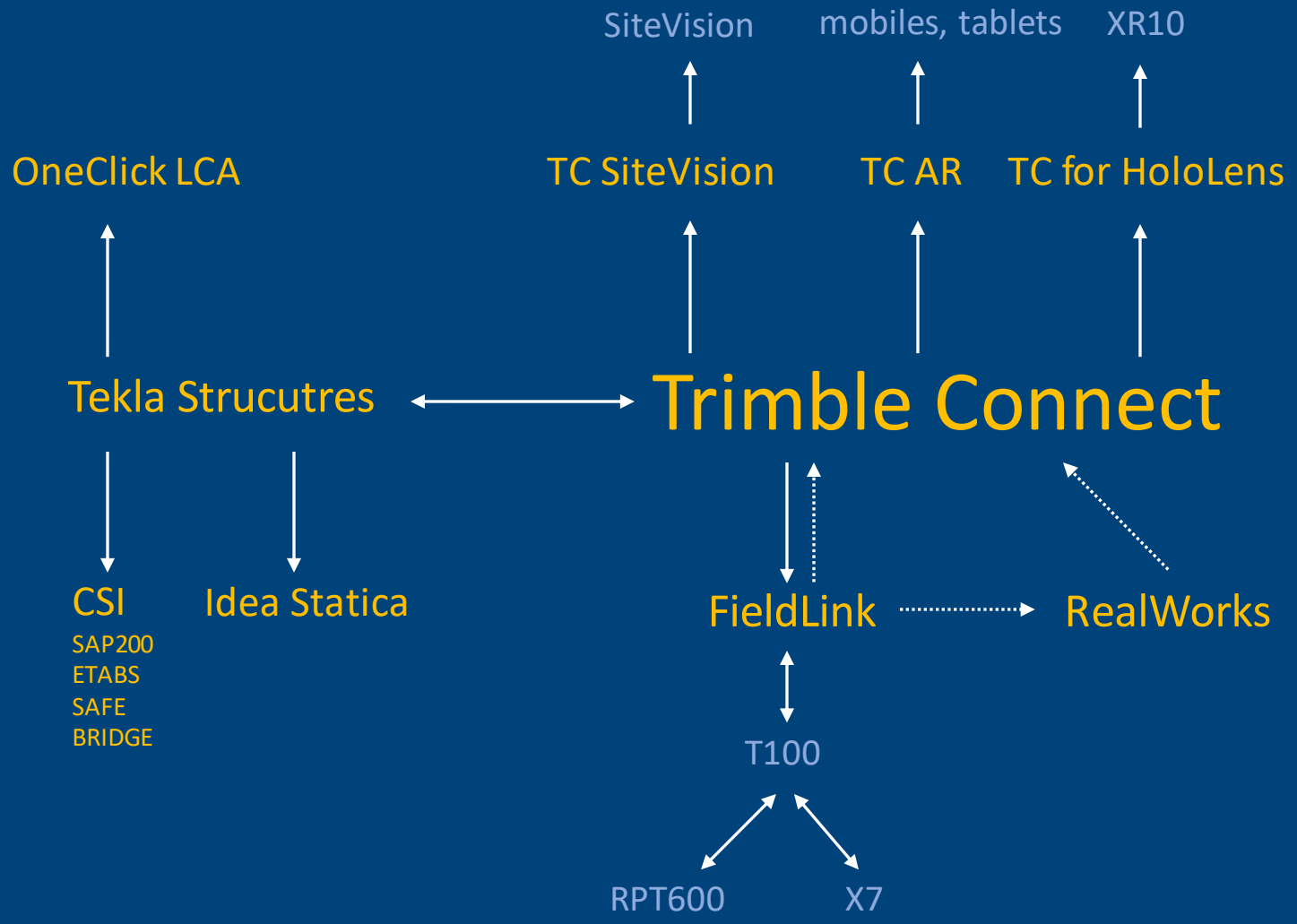
Trainings, courses, BIM implementation, company environment, extensions, plugins, workflow.



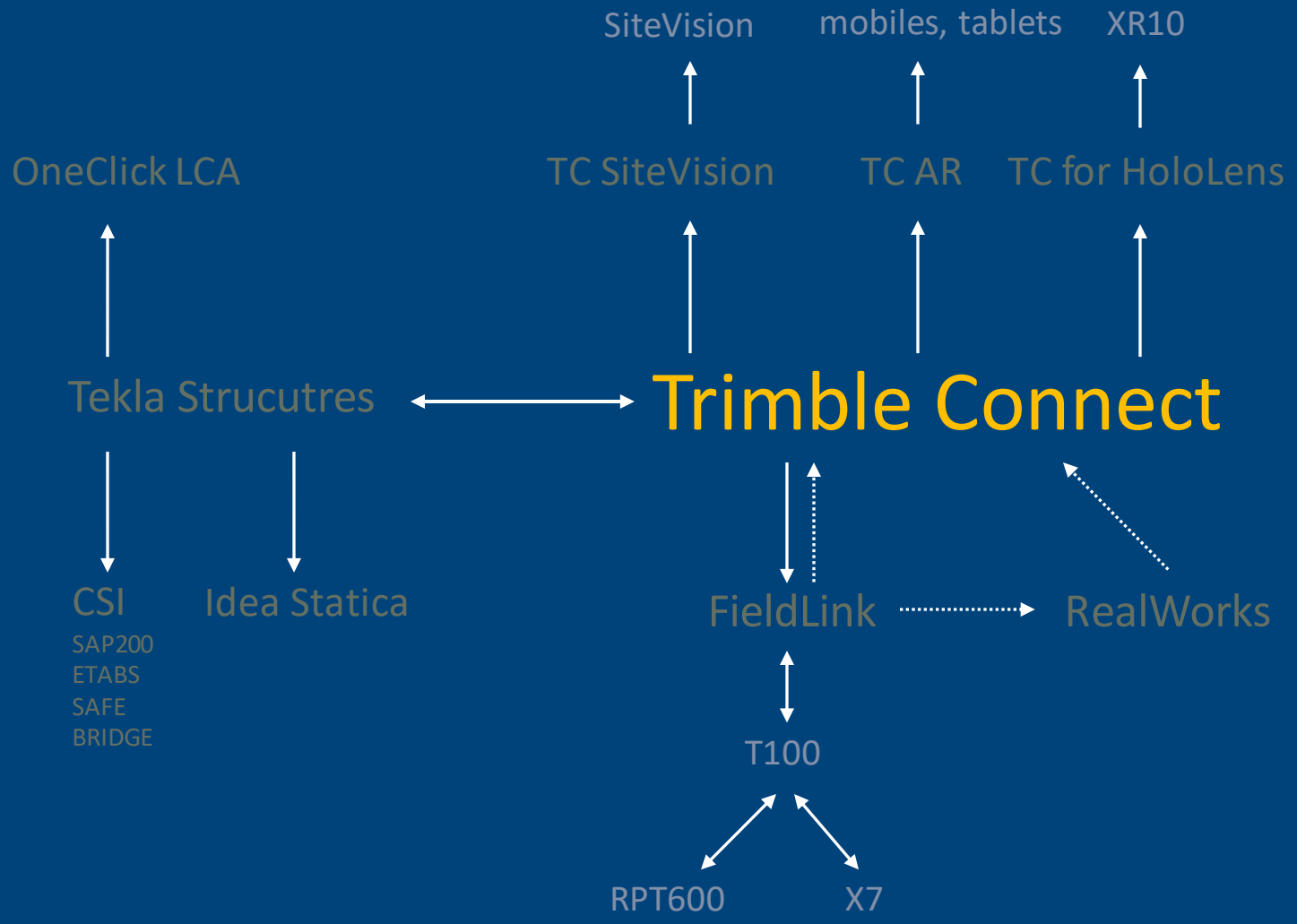


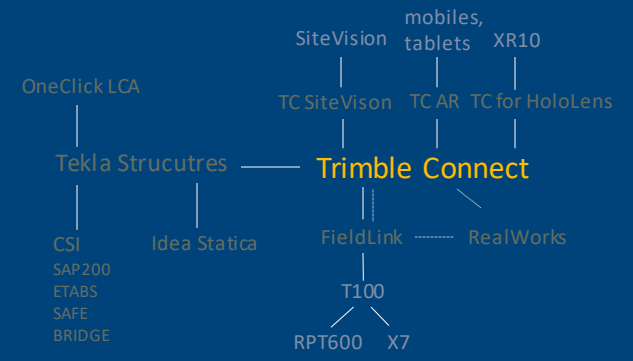












Owner

Permitting



GC/CM

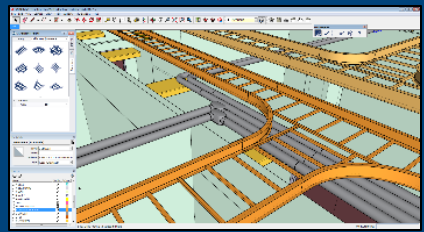


Trimble Connect™

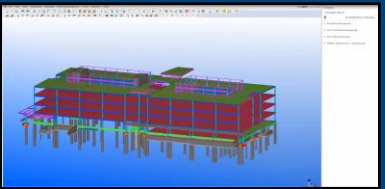
Architect



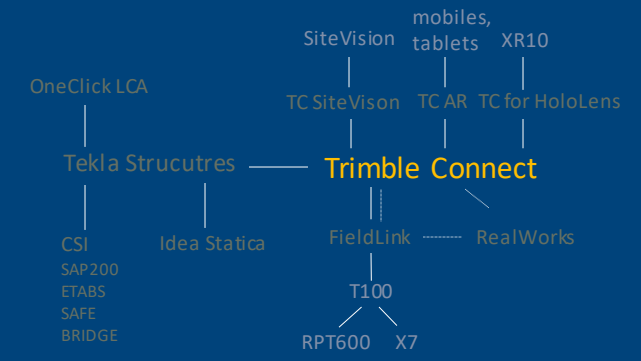
MEP

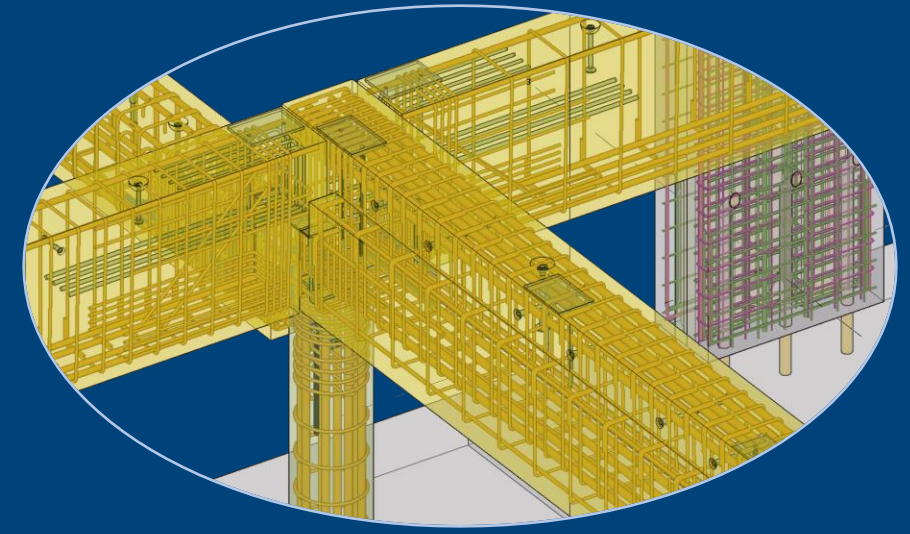
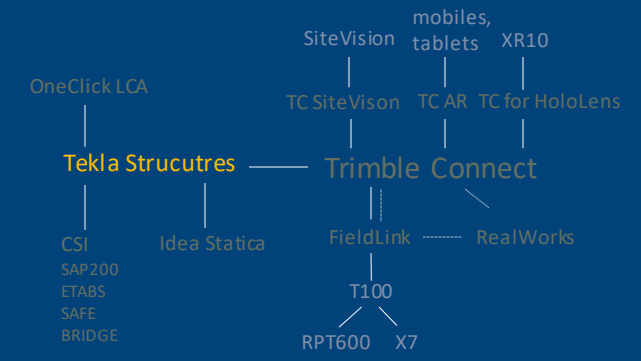
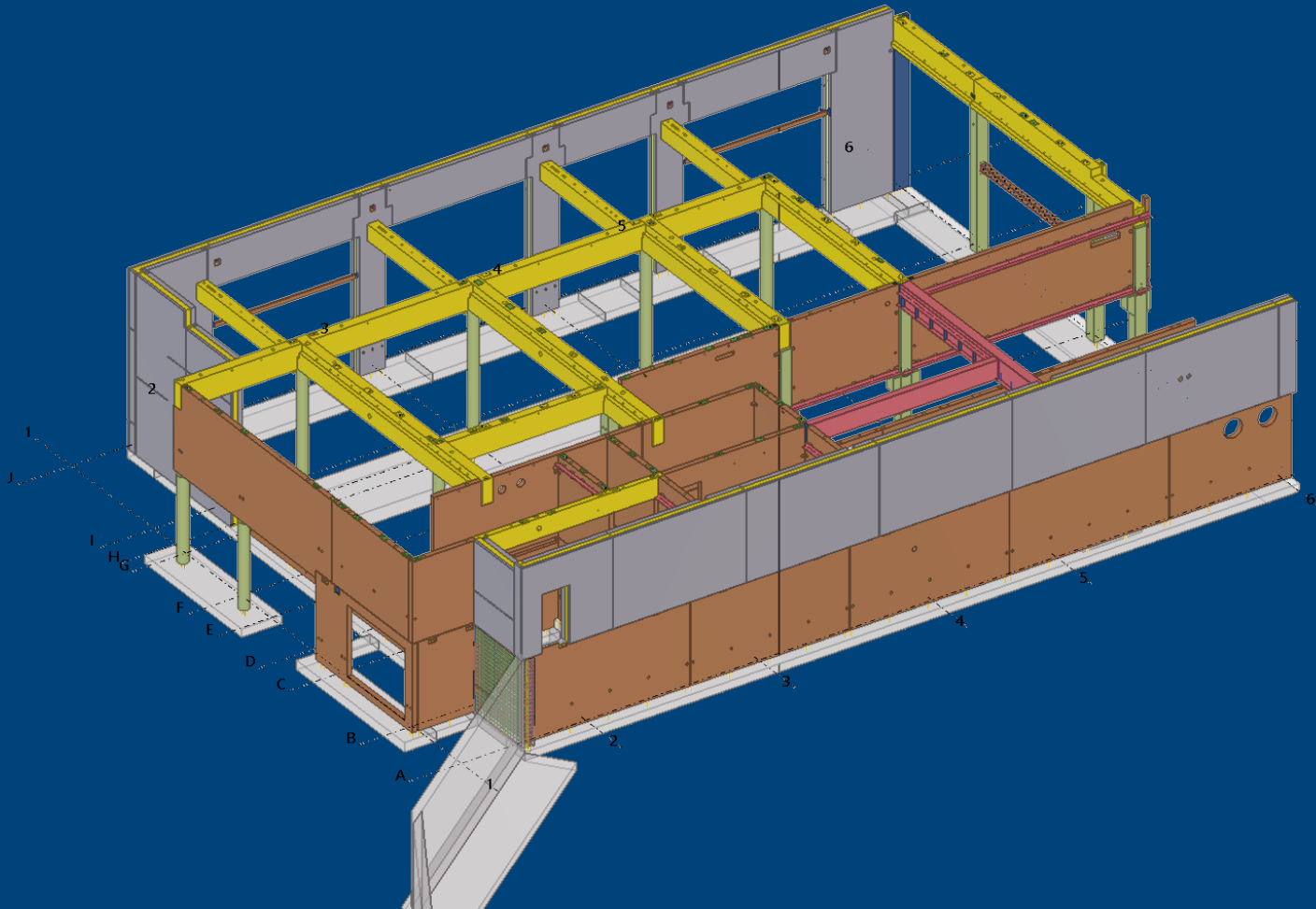


Structural

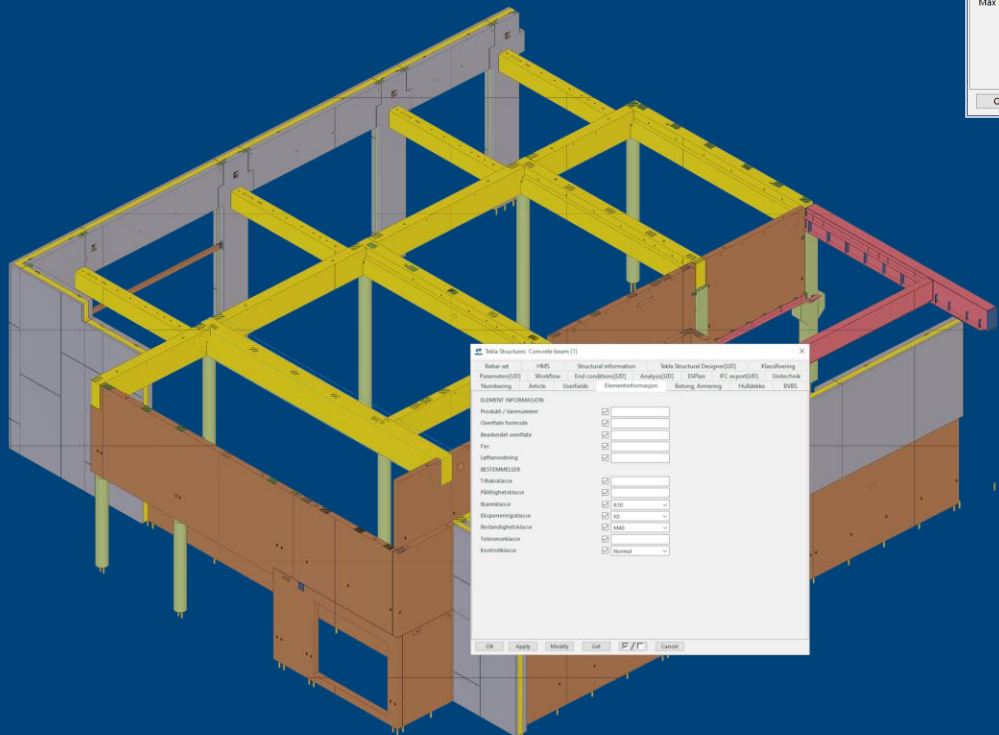
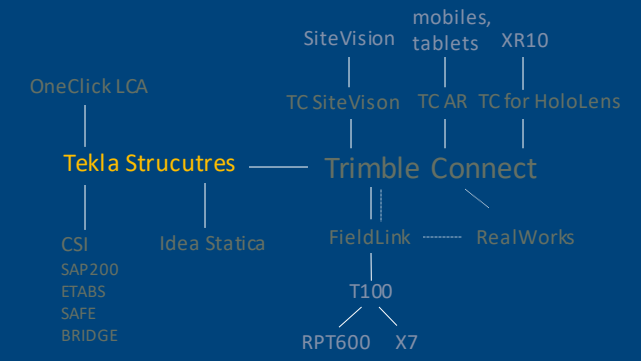
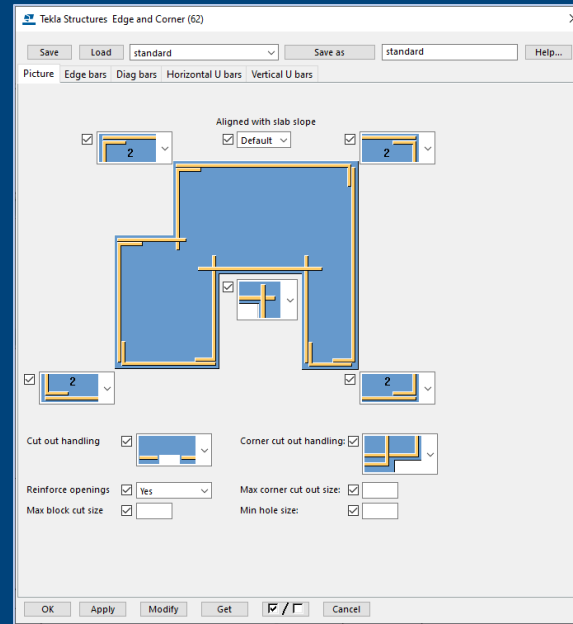
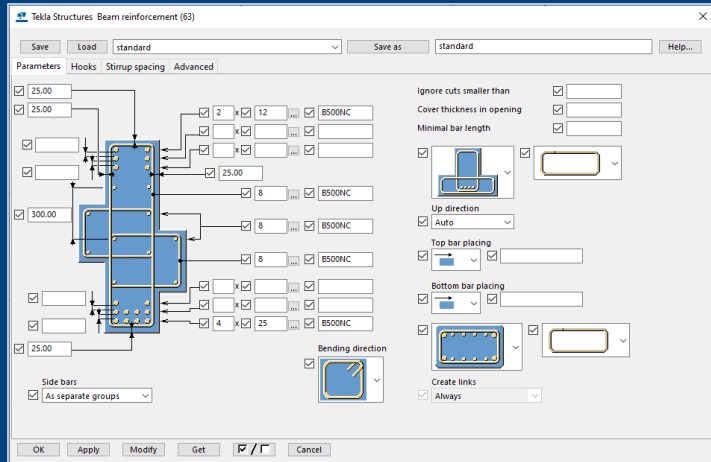


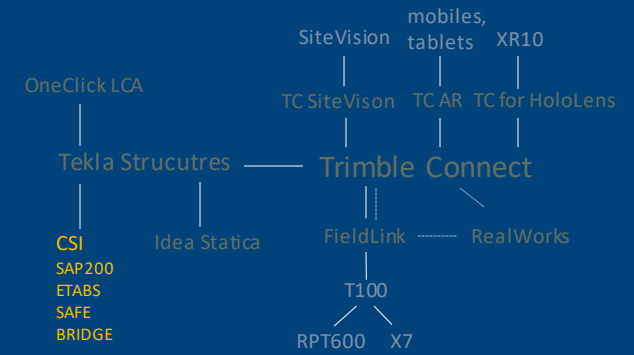










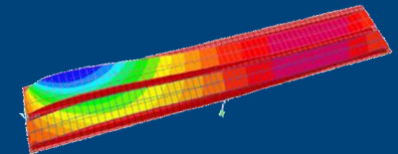
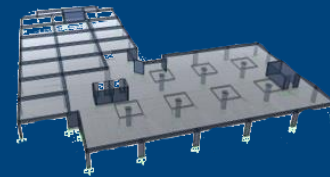
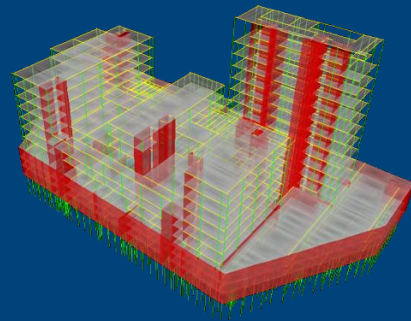
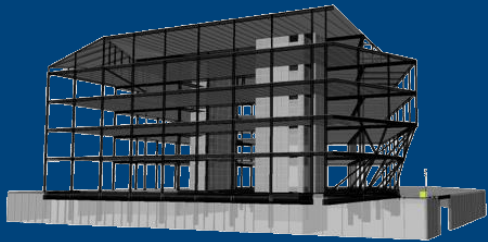


SAP2000®

ETABS®

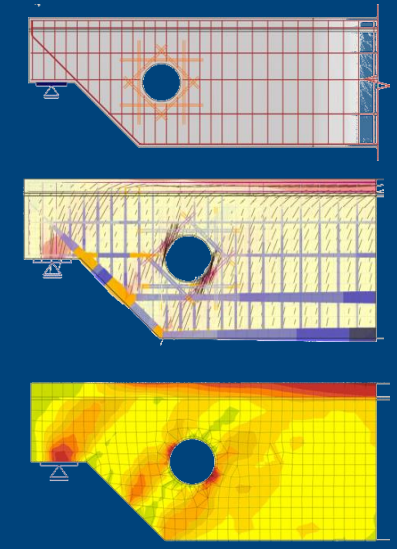
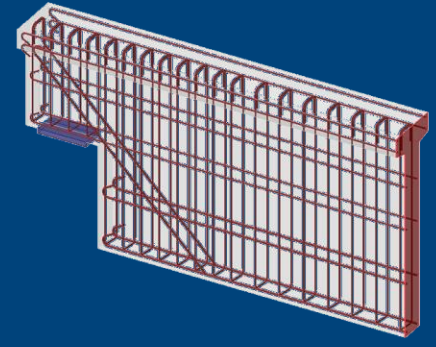
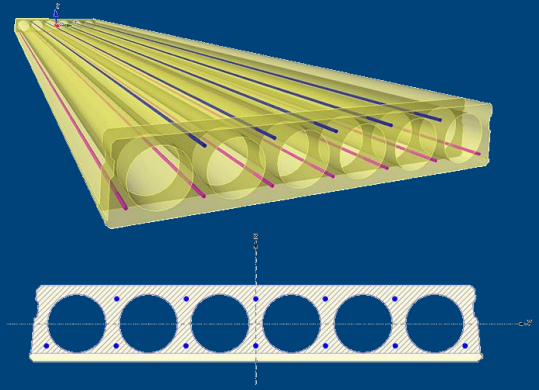
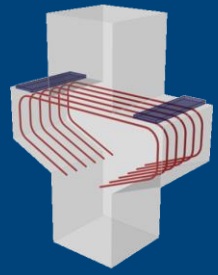
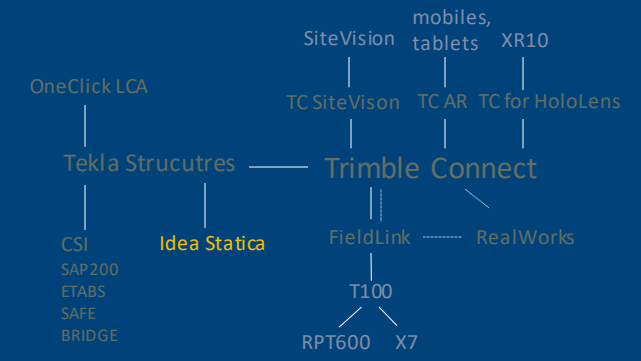
SAFE®

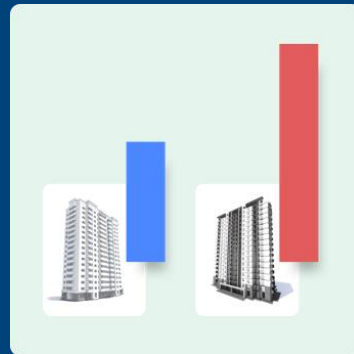
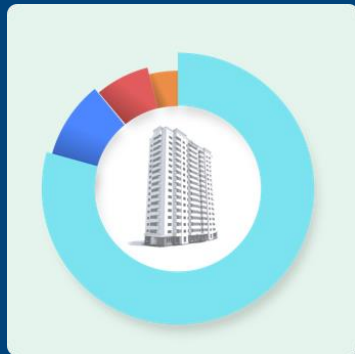
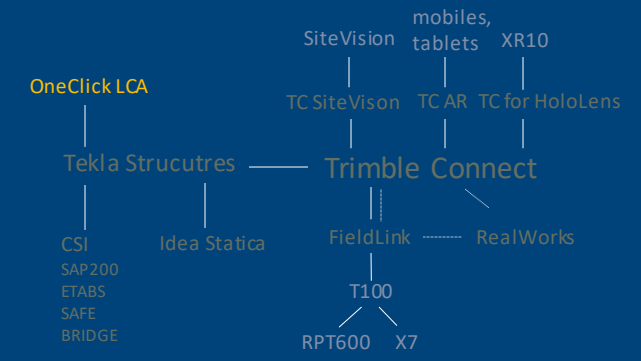
CSI BRIDGE

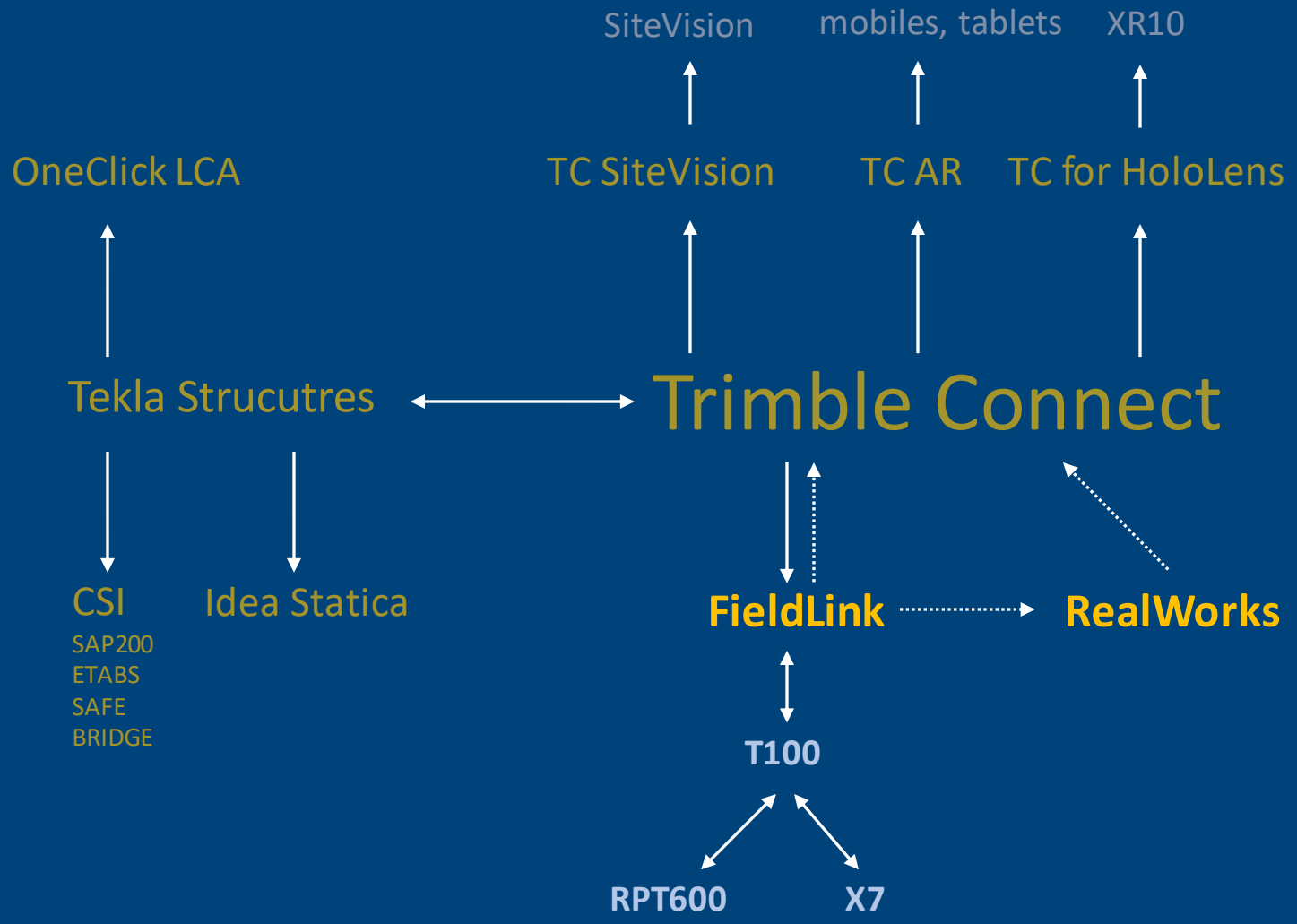




# IDEA StatiCa®

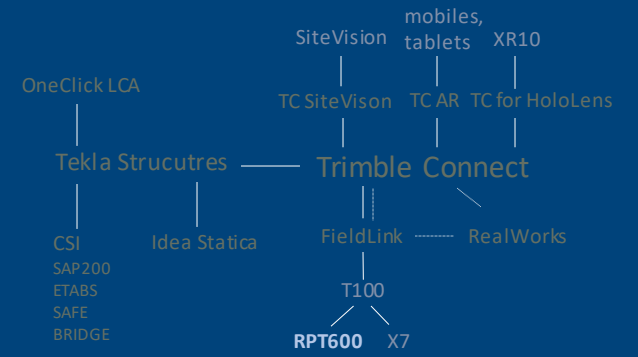




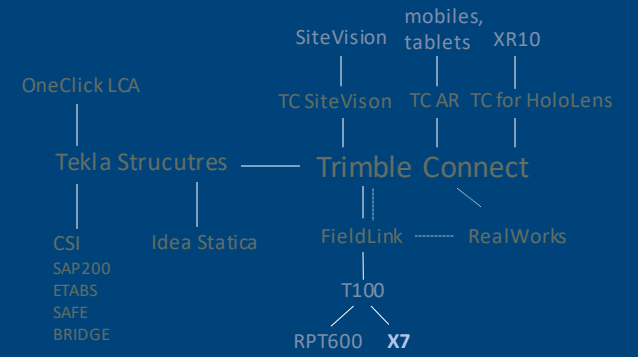




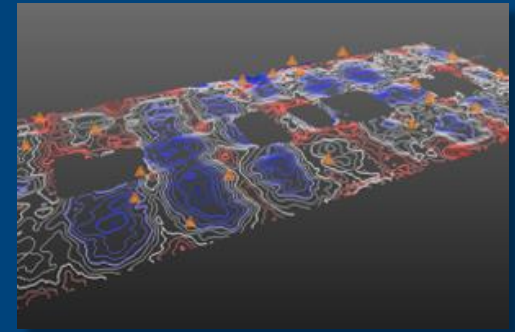
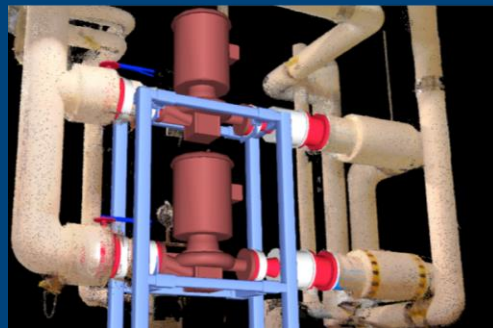
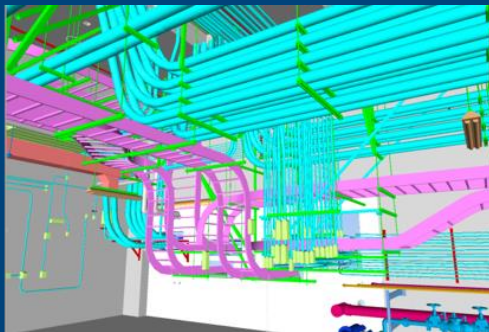
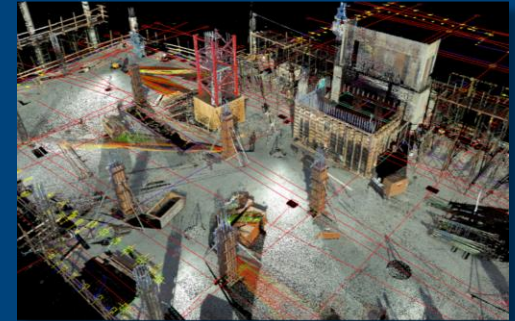
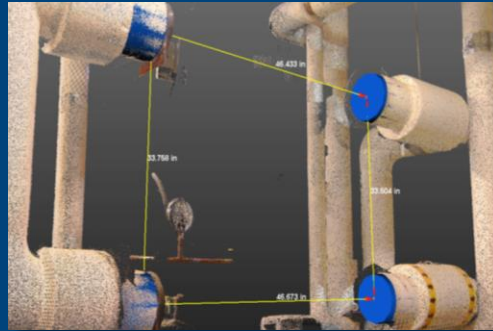
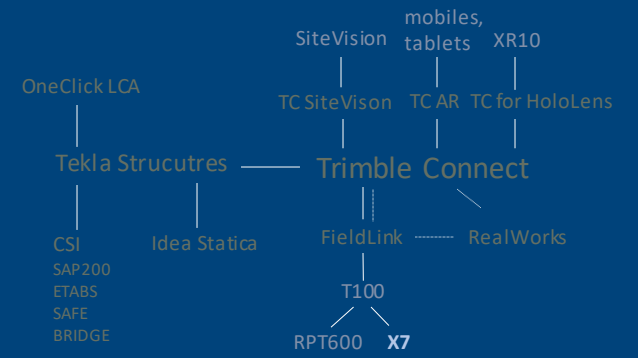
# RPT600



# X7

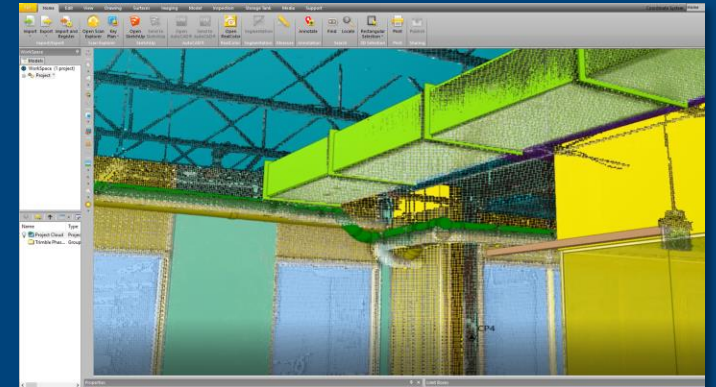
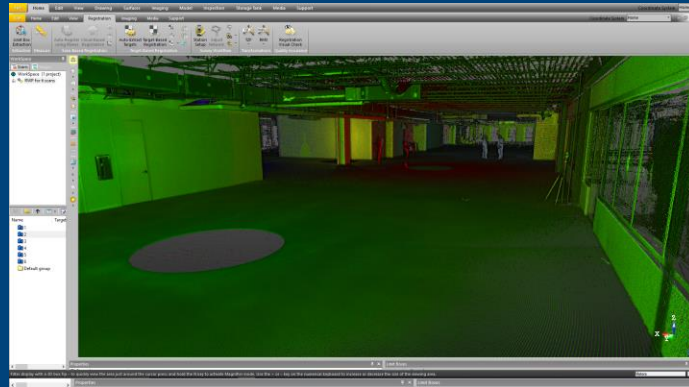
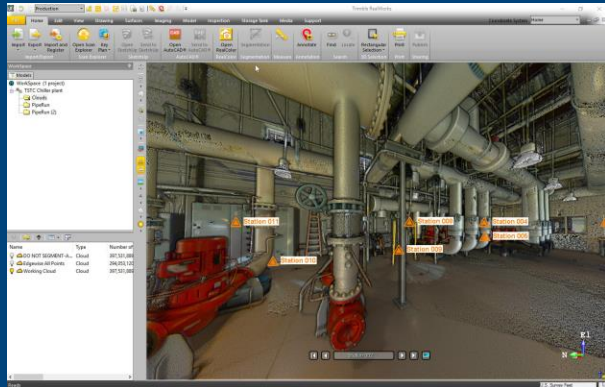
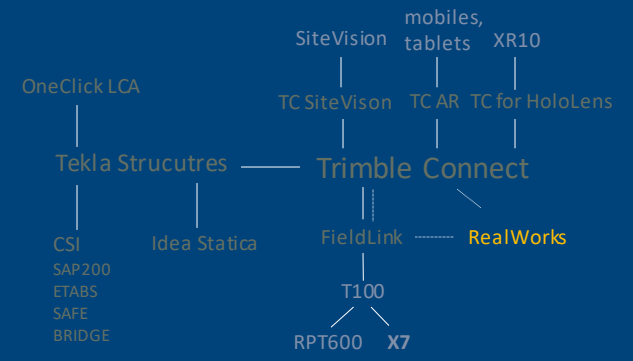


# X7

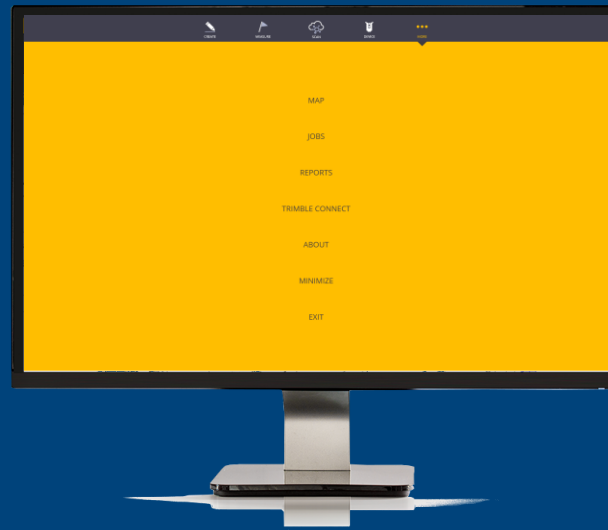
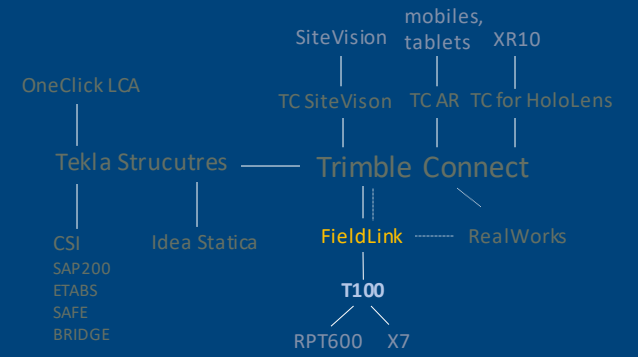


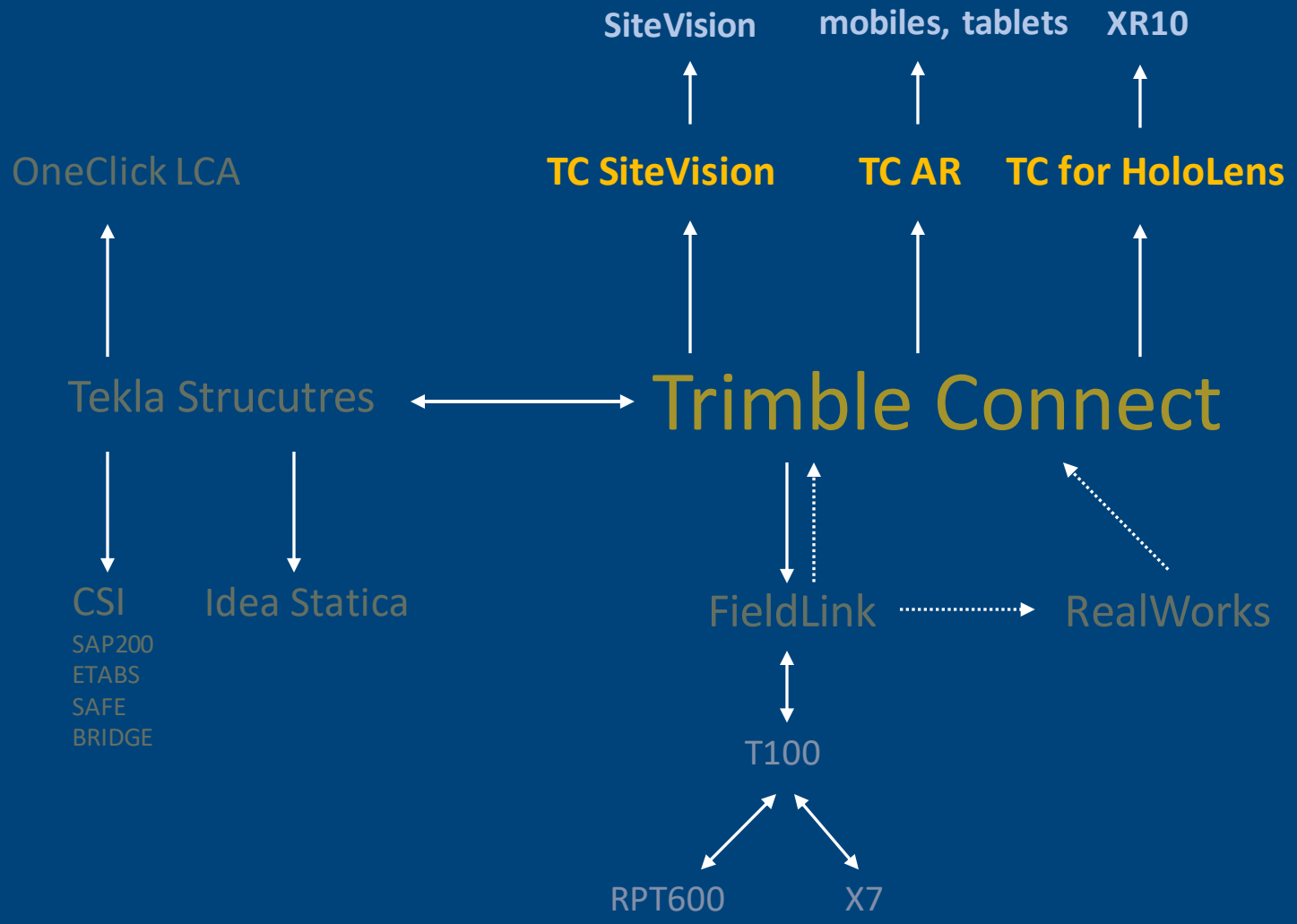


# RealWorks



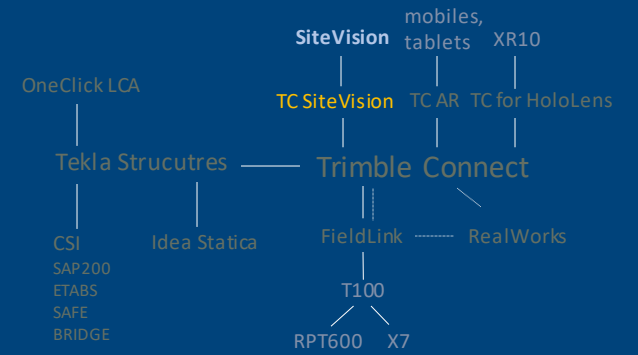
# FieldLink



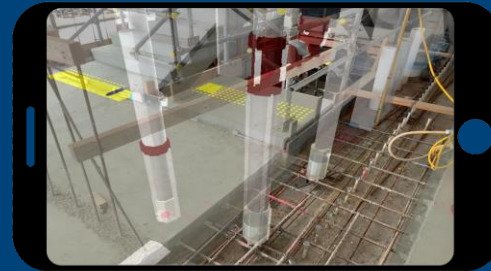
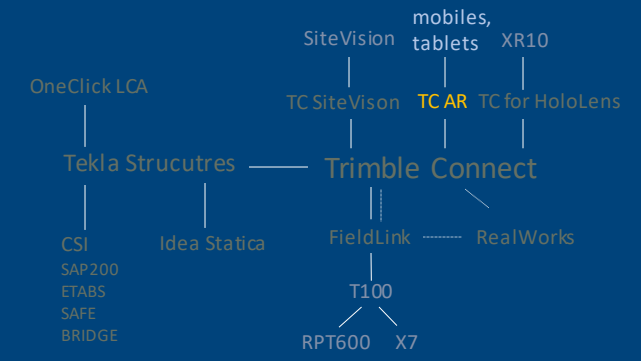




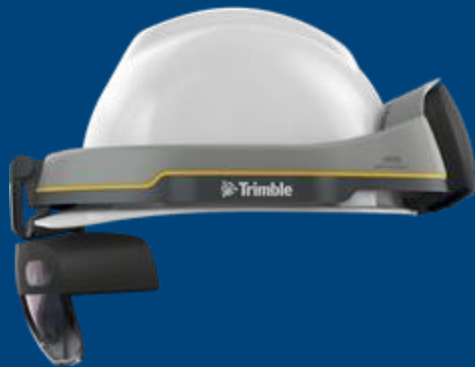
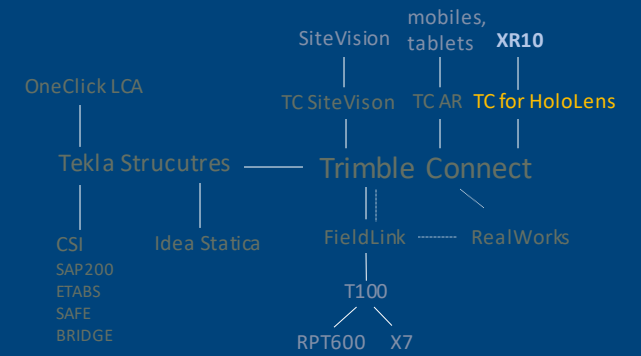
# SiteVision



# Trimble Connect AR



# XR10









## **Support**

Software & hardware assistance



## **BIM Implementation**

Courses, guidelines, custom settings and applications.



## **Full Workflow Solution**

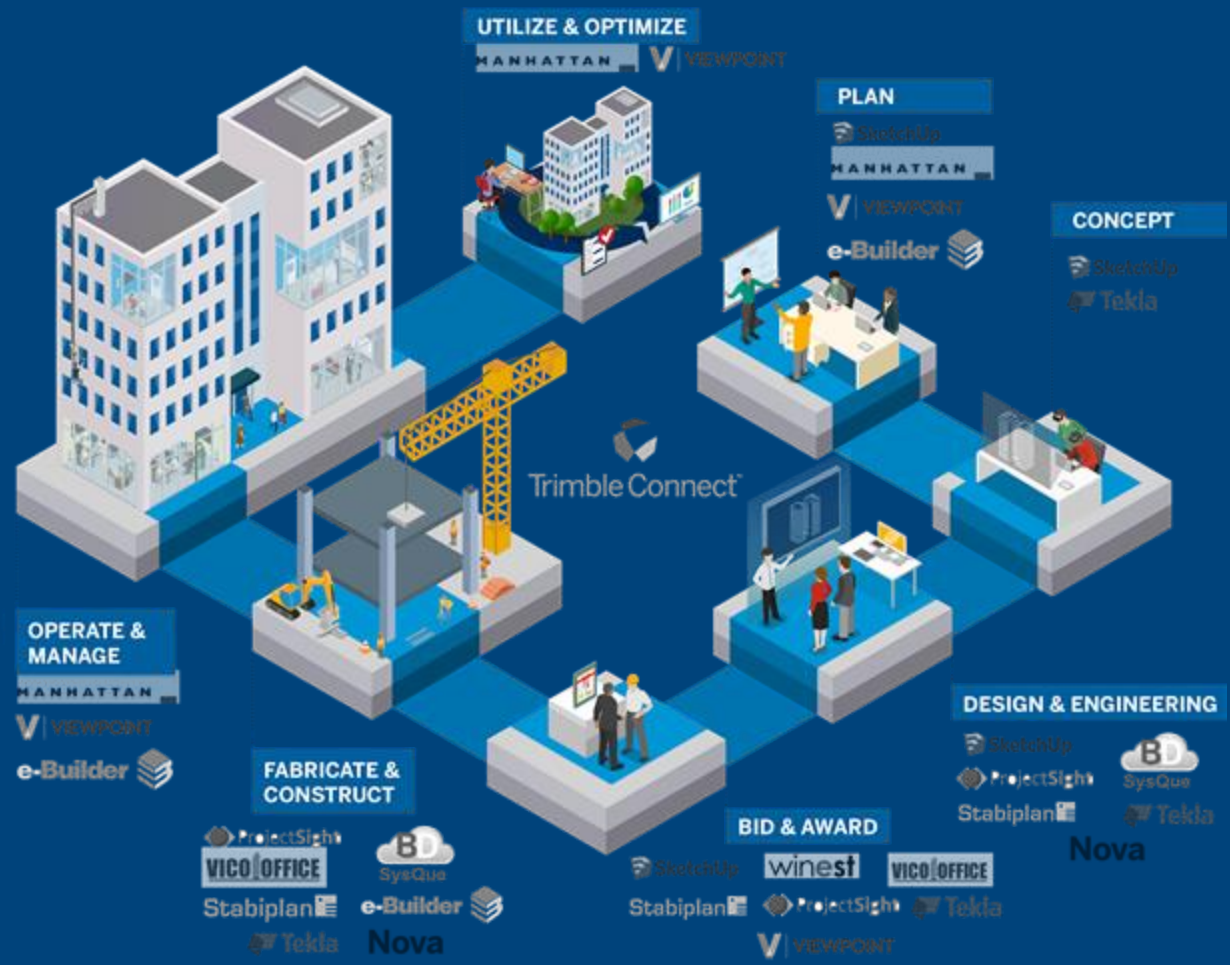
Optimizes workflows across project lifecycles.

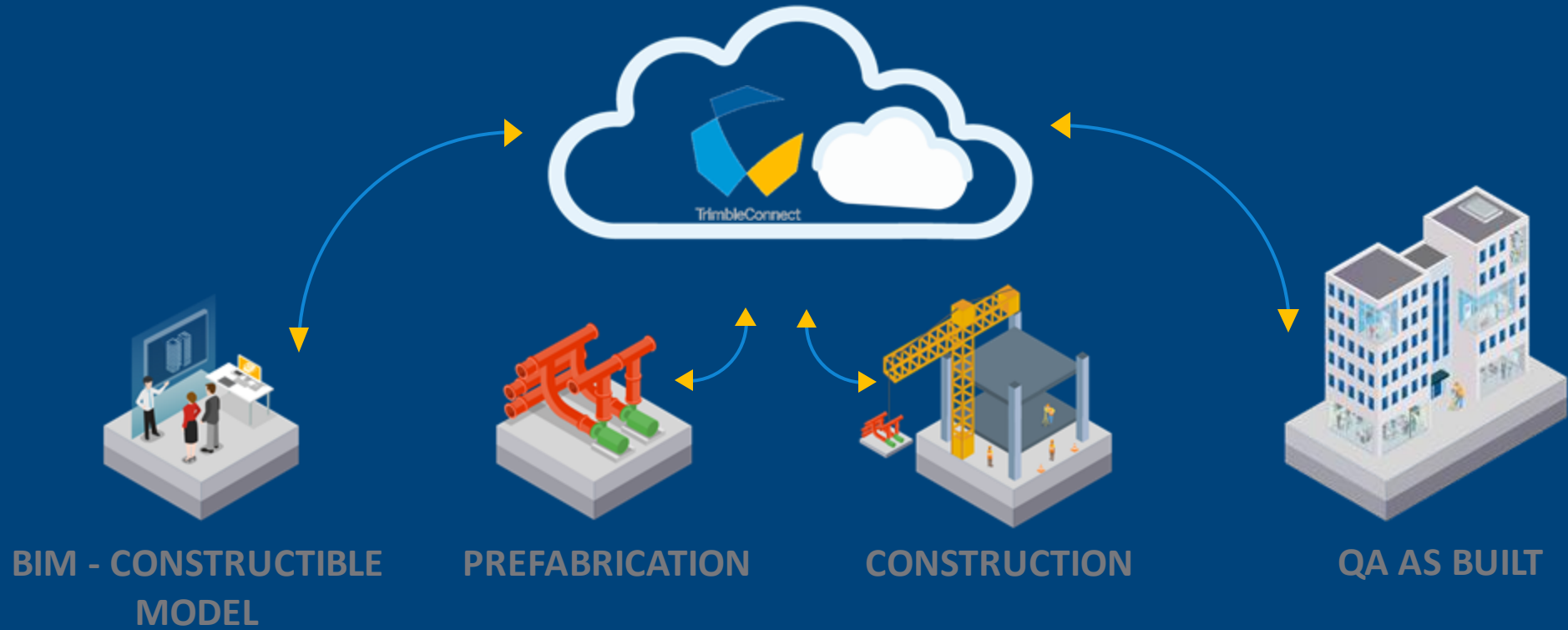












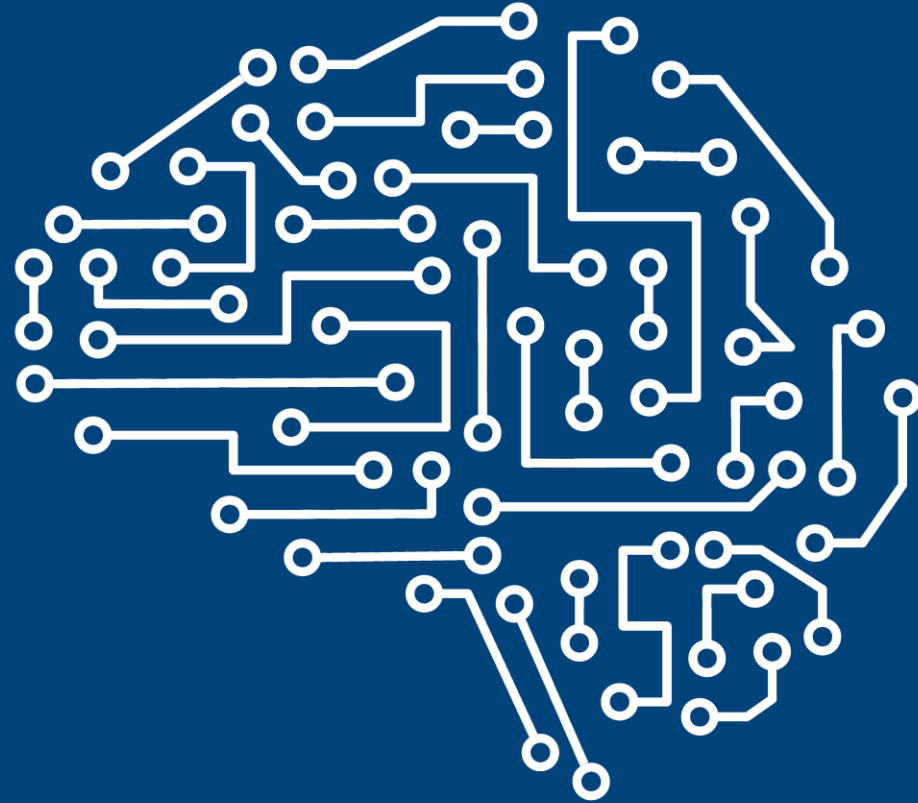








AI



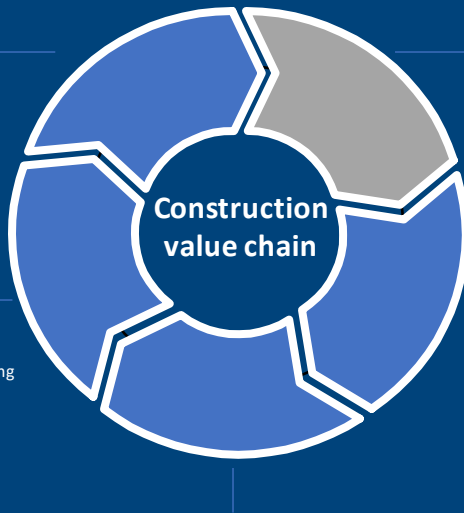


#### Building Material Manufacturers

- Improvement of quality and reduced returns/warranty matters
- Optimized production
- Increased utilization rate in machines
- Reduced setup time in production

#### Building Material Distributors

- Optimize production time
- Optimize inventory levels
- Refine pricing and services to customers
- Autonomous vehicles for picking and packing



#### Architects and planner

- Generative design
- Reduced planning time/efficiency
- More players through the value chain is including this in their offer

#### Construction companies

- Monitor projects and quality in real time
- Autonomous technology/robots/vehicles
- Increased efficiency: tools and recycling
- Increased security

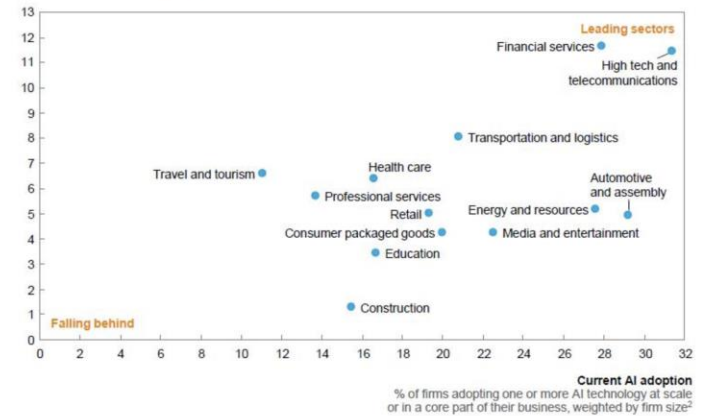
#### Facility Managers

- Automatic adjustment of the building's technical solutions
- Predictive maintenance
- Improved decision support (repair or replace)

#### Sectors leading in AI adoption today also intend to grow their investment the most

##### Future AI demand trajectory<sup>1</sup>

Average estimated % change in AI spending, next 3 years, weighted by firm size<sup>2</sup>









[www.BuildingPoint-Scandinavia.com](http://www.BuildingPoint-Scandinavia.com)